

REALITY NOW

RATINGS & REVIEWS | practical • unbiased • trusted
35TH anniversary | number 323

FirstLook | Composites — Universal

Clearfil Majesty ES-2 Universal

Manufacturer

Kuraray Noritake
www.kuraraydental.com

Price

Kits

None

Refills

Syringe (3.6g)

\$105.93/3.6g (\$29.43/g)

Unidose tips (20)

\$113.14/5g (\$22.63/g or \$5.66 ea)

Shelf Life

4 years



Described as Intelligent Simplification, Clearfil Majesty ES-2 Universal is the latest entry into the one-shade-matches-all-teeth market. But Kuraray Noritake is being more realistic and honest than most other manufacturers as this product is only being promoted to match posterior teeth for Class I and II restorations. It is stated to be the “go-to solution for common posterior restorations, independent of the color of the underlying and adjacent tooth structure”.

And, in taking a jab at one of its competitors, it is claiming that no blocker or opaquer is necessary. This bold claim is due to its translucency and “Light Diffusion Technology (LDT)”, which make restorations diffuse light in a similar way tooth structure does.” So no more shade guides or shade selection for posterior restorations.

Note: While there is no reason you can’t also use it for Class III-V restorations, Kuraray Noritake explicitly acknowledges it may not always hit the mark for these situations. We find it refreshing that a manufacturer actually admits that a product could have certain limitations. This makes its claims even more reassuring.

The material itself has a mean particle size range of 0.37-1.5 microns. It is filled 78% by weight and 66% by volume. Its volumetric shrinkage is stated to be 1.9%, which is very low for a universal material, while its depth of cure is 2.0mm, which means it is not a bulk fill composite. We found its working time under a dental unit light to be about 60 seconds.

The handling is really nice. It has minimal stickiness, very little slump, and easy sculpting. After finishing and polishing, we found almost no voids. It polishes to a nice gloss with an Occlubrush, which we used since the product is mainly indicated for Class I and II.

On the lab bench, the shade is similar to A2. Its translucency/opacity was measured at 64.7%, which is slightly more opaque than typical enamel shades of other systems. Since it is primarily a posterior restorative, fluorescence is not as important as it would be for an anterior-oriented material, but nevertheless, we found

it to be very close to natural teeth. Its shade matching property validation will have to wait for its full clinical evaluation.

Since this is a single-shade product, there are no kits. Both the syringes and tips come in sealed plastic bags that are difficult to store on a shelf. The bags are imprinted with the shade identification, i.e., universal, and the expiration date.

The black, screw-type syringes have moisture-resistant labels with the expiration date heat-stamped, while the shade is in a color-coded band near the tip. The shade is also found on the label on both sides of the end of the plunger and on the back end for viewing in a composite caddy.

The tips have a long nose with a ring at the halfway mark that gives the color-coded caps a definitive snap-off/snap-on closure. The color-coding is orange. The product name, shade, expiration date and lot number are imprinted on the tips themselves.

The ends of the tips are rather large and may not fit very well into a small to medium proximal box. Therefore, you will need to be careful packing this rather thick material onto a gingival wall to prevent voids unless, of course, you use a flowable composite before injecting this material.

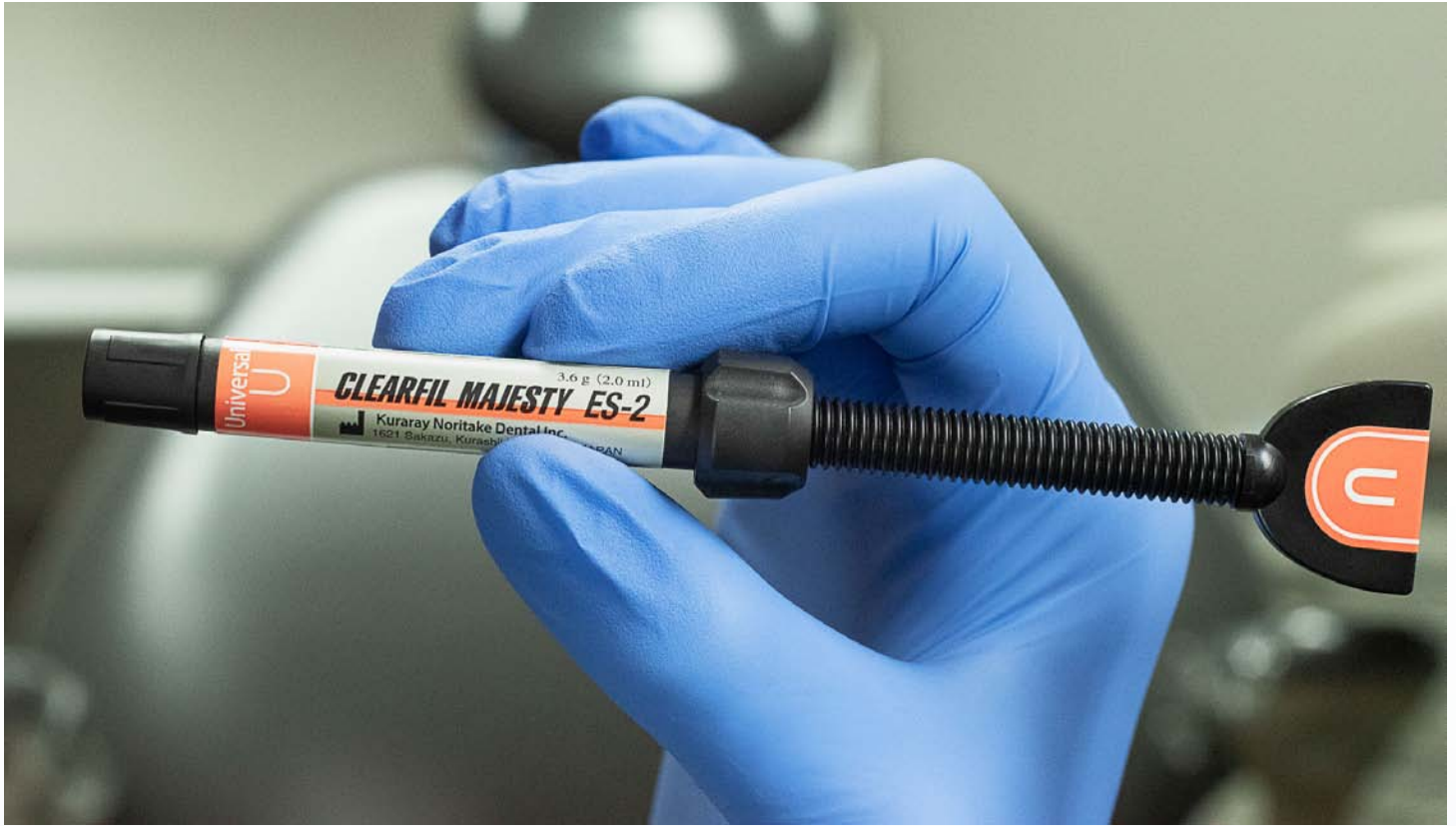




The directions are multi-lingual, plain paper in the annoying foldout format. They include information on the entire spectrum of Clearfil Majesty ES-2 composites, namely the Premium and Classic assortments. While we understand that this type of all-inclusive instructions is more economic, the whole idea around this product is simplification. We would have preferred directions that only are pertinent for this product. In other words, a clinician buying this product doesn't need information on shade matching, which is included in these instructions.

There are no photos and illustrations, but the information itself is clear and easy to understand.

Clearfil Majesty ES-2 Universal appears to be a very capable posterior composite assuming you are not a bulk fill advocate. Its one-shade approach should work very well, especially since a perfect match to tooth structure is just not as critical as it is anteriorly. Stay tuned for the results of its full evaluation, which is pending.



Michael B. Miller, D.D.S. – President/Editor-in-Chief

Ingrid R. Castellanos, C.D. – Vice President/Publisher

Editorial Team: M. Bilge Akbulut, D.D.S., Ph.D., Konya, Turkey; Leslie C. H. Ang, B.D.S., M.Sc.; Robert W. Baker, Jr., D.M.D, Ithaca, NY; Sema Belli, D.D.S., Ph.D., Konya, Turkey; Nathan S. Birnbaum, D.D.S., Wellesley, MA; Alan A. Boghosian, D.D.S., Chicago, IL; Sonia Regina Bordin-Aykroyd, D.D.S., M.Sc., Sao Paulo, Brazil; Matthew Brock, D.D.S., C.A.G.S., M.S.D., Chattanooga, TN; Mitch A. Conditt, D.D.S., Fort Worth, TX; Simona Cuevas, D.D.S., San Antonio, TX; Marvin A. Fier, D.D.S., Pomona, NY; George A. Freedman, D.D.S., Toronto, Ont., Canada; John Gammichia, D.M.D., Orlando, FL; Fay Goldstep, D.D.S.; Toronto, Ont., Canada; Gary Henkel, D.D.S., Horsham, PA; David S. Hornbrook, D.D.S., San Diego, CA; Timothy F. Kosinski, M.S., D.D.S., Bingham Farms, MI; Hannu O. Laamanen, D.D.S., M.S., Turku, Finland; Carole Landman, D.D.S., Chicago, IL; Clarence C. Lindquist, D.D.S., Washington, D.C.; Edward Lynch, M.A., B.D.Sc., Ph.D., London, UK; Hans Malmstrom, D.D.S., Rochester, NY; Robert C. Margeas, D.D.S., Des Moines, IA; Sandesh Mayekar, M.D.S., Mumbai, India; Steven McGowan, C.D.T., Seattle, WA; Michael K. McGuire, D.D.S., Houston, TX; Elaine Mo, B.D.S., London, UK; Aikaterini Papathanasiou, D.D.S., Boston, MA; Christopher Pescatore, D.M.D., Danville, CA; Stephen D. Poss, D.D.S., Brentwood, TN; Robert G. Ritter, D.M.D., Juniper, FL; Joseph Sabbagh, D.D.S., M.Sc., Ph.D, Beirut, Lebanon; Andrew T. Shannon, D.D.S., Vancouver, BC, Canada; Todd Snyder, D.D.S., Laguna Niguel, CA; Liviu Steier, D.M.D., Needham, MA; Franklin Tay, B.D.Sc.(Hons), Ph.D., Augusta, GA; Stephanie Tilley, D.M.D., Pensacola, FL; Marcos A. Vargas, D.D.S., M.S., Iowa City, IA; Nicholas Vece, D.M.D., Mt. Kisco, NY; Charles Wakefield, D.D.S., Lewisville, TX; Thomas G. Wilson, Jr., D.D.S., Dallas, TX; David Winkler, D.D.S., Odense, Denmark; Tyler Wynne, D.D.S., Clemmons, NC.

To become a member of REALITY RATINGS & REVIEWS, please visit our Web site at www.realityratings.com.

NO COMMERCIALIZATION POLICY

We accept no advertising and are not beholden to any commercial interest. Product evaluations and ratings are intended only to guide our readers to make wise and informed purchases. The unauthorized use of product evaluations and ratings in advertising or for any other commercial purpose is strictly forbidden.

REALITY RATINGS & REVIEWS (ISSN#1041-8253) is an online information service from **REALITY** Publishing Company, 1322 Eagle Point Dr., Georgetown, TX 78628, U.S.A., 512-688-3423, Fax 512-489-9225. A one-year membership includes access to the online database plus periodic PDF issues of **REALITY NOW**. Call for membership and publication rates or access our Web site for enrollment information. Payments by check must be in U.S. funds drawn on a U.S. bank, or by Visa, MasterCard, or American Express. All rights reserved. No part of **REALITY RATINGS & REVIEWS** or **REALITY NOW** may be reproduced or transmitted in any form or by any means, electronic or mechanical, including photocopying, recording, or by any information storage and retrieval system without the written permission of the Publisher, except where permitted by law. Copyright ©2021 by **REALITY** Publishing Company. GST #898-896-659. POSTMASTER: Send address changes to **REALITY** Publishing Company, 1322 Eagle Point Dr., Georgetown, TX 78628.



CLEARFIL MAJESTY™ ES-2

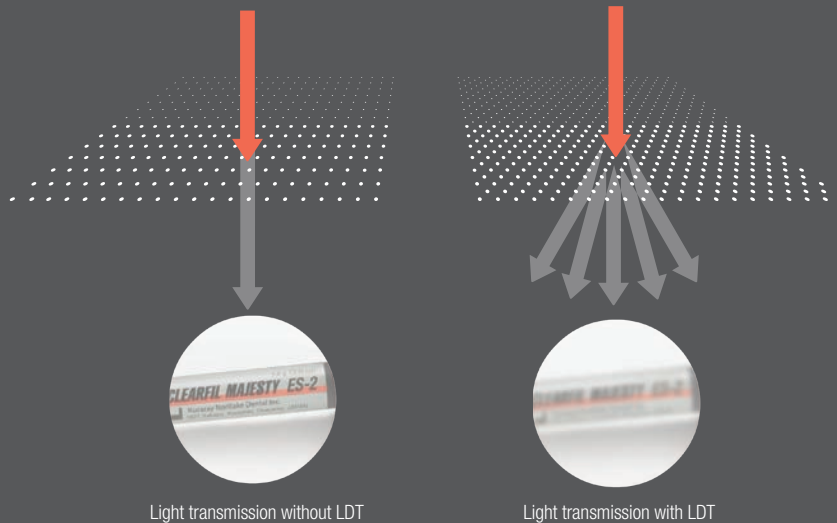
Universal shade concept

ONE SHADE FOR ALL POSTERIOR RESTORATIONS

How many different shades of composite do you need in the posterior region? If you opt for CLEARFIL MAJESTY™ ES-2 Universal, a single shade will do the trick. The go-to solution for common posterior restorations, independent of the color of the underlying and adjacent tooth structure.

NO OPAQUER NEEDED!

A blocker or opaquer is not needed. This is due to the material's specific level of translucency and the integration of Kuraray Noritake Dental's **Light Diffusion Technology (LDT)**, which makes restorations diffuse light in a similar way tooth structure does. As a consequence, the material integrates easily and smoothly into the surrounding tooth structure and preparation margins become virtually invisible.



FOR YOU, THIS MEANS

- ✓ Simplified shade selection without a shade guide
- ✓ Efficient and comfortable procedure (single-shade technique, no blocker or opaquer)
- ✓ Fewer steps for consistent, predictable results
- ✓ Appealing outcomes that last

CLEARFIL MAJESTY™ ES-2 Universal offers the same superior mechanical properties as CLEARFIL MAJESTY™ ES-2 CLASSIC:

Flexural Strength:	118 MPa
Filler Load:	78 wt%
Compressive Strength:	347 MPa
Volumetric Shrinkage:	1.9 %
Curing Depth:	2.0 mm
Working time under ambient light:	270 sec.

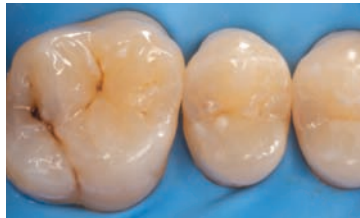
Source: Kuraray Noritake Dental Inc.

CLINICAL CASE

SIMPLIFIED POSTERIOR RESTORATION PROCEDURE ELIMINATING SHADE SELECTION

by Dr Piotr Marchewka

Efficiency is an important factor when it comes to restoring posterior cavities with resin composite. It may be achieved by selecting a material that eliminates the need for shade selection and by the use of simplified layering techniques. For example, in the clinical case below, a maxillary first molar and second premolar were restored with CLEARFIL MAJESTY™ ES-2 Universal (U) using the single-shade technique.



Initial situation. Carious lesions are detected on the occlusal and palatal surfaces of the first molar, and in the distal aspect of the second premolar. Rubber dam was placed for moisture control.



Appearance of the teeth following caries removal, selective etching of the enamel, and application of CLEARFIL™ SE BOND 2.



Sectional matrix in place. It is used to facilitate the creation of a proper interproximal contact.



Occlusal view of the final restorations produced with CLEARFIL MAJESTY™ ES-2 Universal.

PRODUCT ASSORTMENT

CLEARFIL MAJESTY™ ES-2 Universal SYRINGE

#3181-KA CLEARFIL MAJESTY™ ES-2 Universal (U)
1x Syringe 2.0ml (3.6g)



CLEARFIL MAJESTY™ ES-2 Universal PLT

#3191-KA CLEARFIL MAJESTY™ ES-2 Universal (U)
20x 0.25g PLT/pack



YOUR CONTACT

Kuraray America, Inc.

32 Old Slip Phone (800) 879-1676
FL 7 Fax (888) 700-5200
New York, NY 10005 E-Mail info@kuraraydental.com
Website kuraraydental.com

- Before using this product, be sure to read the Instructions for Use supplied with the product.
- The specifications and appearance of the product are subject to change without notice.
- Printed color can be slightly different from actual color.

“CLEARFIL” and “CLEARFIL MAJESTY” are trademarks of KURARAY CO., LTD.

Kuraray Noritake Dental Inc.
1621 Sakazu, Kurashiki, Okayama 710-0801, Japan
Website www.kuraraynoritake.com

Rx Only

3181LT 01/2021