



**JORGE F. ZAPATA,
DDS**

Jorge F. Zapata, DDS, has a private practice in Ogden, UT, where he specializes in microdentistry.

CASE PRESENTATION

Keep It in the Family for Direct Restoration Success

Successful restoration outcomes depend on a variety of factors, including clinician skill, practice team work, and the individual materials used in the procedure. Choosing from all of the available materials—composites, etchants, bonding agents, and cements—may be the biggest challenge. Knowing what will work well together and following individual manufacturer instructions to ensure consistent results can be a bit of a balancing act. One way to overcome these hurdles and also streamline workflows is to use materials designed to work well together.

That was certainly true in the case of a 30-year-old patient who presented with extreme cold sensitivity in teeth on the upper left posterior. After thermal testing, which was normal, we made a diagnosis of reversible pulpitis. In collaboration with the patient, we chose to treat her with a direct restoration using Clearfil Majesty ES-2 Universal (Kuraray). We chose this material because of its chameleon effect on teeth that have multiple shades. We also chose to use other Kuraray products—Clearfil SE Protect and Clearfil Majesty ES Flow—that we know are compatible and help us achieve consistently good outcomes for our patients.

Procedure Steps

After isolating the teeth and administering local anesthesia, we prepared the teeth. We then etched them for 10 seconds, followed by rinsing and drying.

To ensure we successfully treated the patient's sensitivity, we implemented two techniques specifically designed to do just that. We applied Clearfil SE Protect to the prepared teeth using the immediate dentin sealing technique. This progressive protocol

protects the pulp, addresses sensitivity, and helps establish a strong bond to enamel. Next, we applied Clearfil Majesty ES Flow using the resin-coating technique to minimize pulp irritation and improve bond strength.

For a natural, esthetic appearance, we used the stratification technique and Clearfil Majesty ES-2 Universal flowable composite, which is designed for all posterior restorations and uses Light Diffusion Technology so they naturally diffuse. The result is smooth integration with surrounding tooth structure and virtually invisible preparation margins.

Final Result

The patient was pleased with the final restorative result and relieved that her cold sensitivity resolved. Using Kuraray's family of Clearfil products allowed us to deliver the case efficiently and provide the patient with an excellent outcome.



Figure 1—Patient presents with cold sensitivity on teeth in the upper left posterior

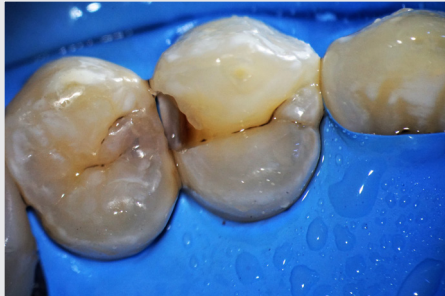


Figure 2—After rubber dam isolation and local anesthetic application, the teeth are prepared

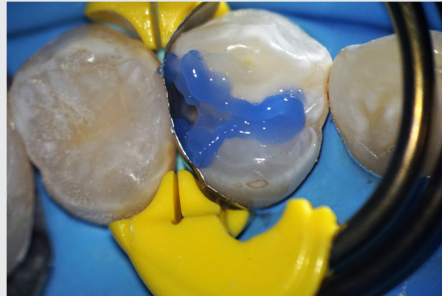


Figure 3—Etchant is applied for 10 seconds

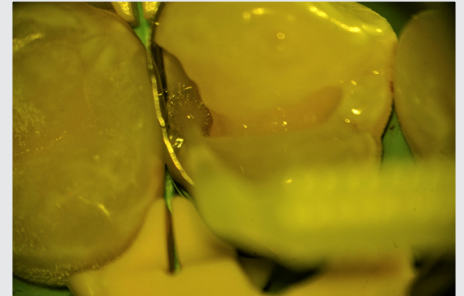


Figure 4—Clearfil SE Protect is placed on the prepared teeth using the immediate dentin sealing technique



Figure 5—Clearfil Majesty ES Flow is placed using the resin-coating technique



Figure 6—Clearfil Majesty ES-2 Universal is placed using the stratification technique



Figure 7—Final restorations provide strength and esthetics and the techniques and materials used protect the teeth from cold sensitivity

GO-TO PRODUCTS USED IN THIS CASE



CLEARFIL MAJESTY ES-2 UNIVERSAL

Clearfil Majesty ES-2 Universal flowable composite is one shade for all posterior restorations. It uses Kuraray's Light Diffusion Technology (LDT), which causes restorations to diffuse light in a way similar to natural teeth. This smooth integration with surrounding tooth structure results in undetectable prep margins.

KURARAY NORITAKE DENTAL INC.

800.879.1676
kuraray.us.com



CLEARFIL SE PROTECT

Clearfil SE Protect contains Kuraray's proprietary self-etching, light-cure technology as well as long-term fluoride release and MDPB monomer, which has an antibacterial cleansing effect.

KURARAY NORITAKE DENTAL INC.

800.879.1676
kuraray.us.com



CLEARFIL MAJESTY ES FLOW

Clearfil Majesty ES Flow light-cure universal flowable, which is an excellent base/liner, also has the strength and esthetics for Class I, Class II, Class V, and occlusal restorations. The material is easy to polish and its shades (A1, A2, A3, A3.5, A4, KA6, B1, B2, XW, and W) correspond with the Clearfil Majesty ES-2 shade guide.

KURARAY NORITAKE DENTAL INC.

800.879.1676
kuraray.us.com