

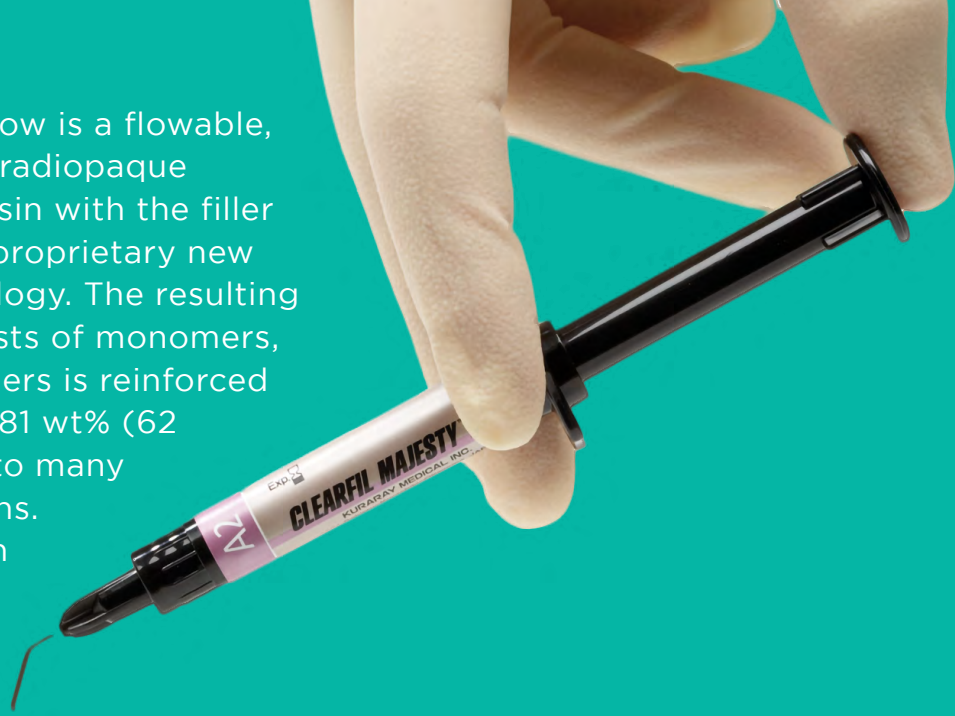
CLEARFIL MAJESTY™ Flow

A Highly Filled, Radiopaque, Micro-Hybrid Composite

**A Universal Flowable / And
Restorative Solution**



CLEARFIL MAJESTY™ Flow is a flowable, superfilled, light-curing, radiopaque restorative composite resin with the filler particles treated with a proprietary new Nano Dispersion Technology. The resulting resin matrix which consists of monomers, nano fillers and micro fillers is reinforced with a high filler load of 81 wt% (62 vol%), a content similar to many universal composite resins. But not only the strength of the material – also the handling properties are convincing.



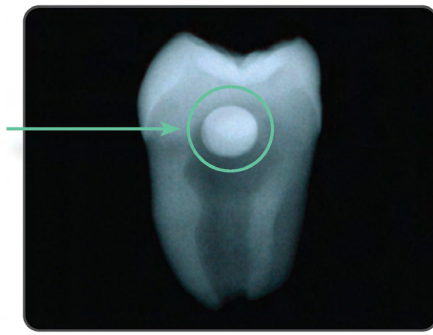
FEATURES AND BENEFITS

- **High radiopacity** for better radiographic detection
- **New syringe with on-demand delivery and bubble-free dispensing**
- **Very high filler loading (81wt%)** for exceptional strength and wear resistance, even for posterior restorations
- **Liner material or restorative material** with dentin-like properties
- **Lowest polymerization shrinkage** of the current flowables
- **Medium viscosity** so it stays where you place it, yet it flows where it needs to
- **Esthetic shades** for optimal cosmetic results

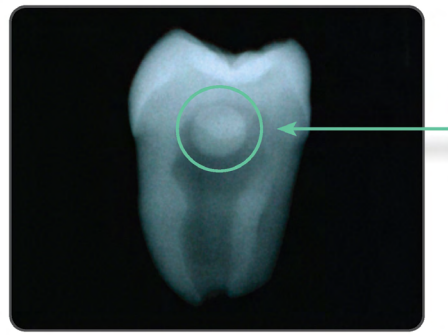
CLINICAL APPLICATIONS

- Intraoral repairs
- Posterior restorations including Class I's, Class II's and Class V's
- Cavity liner and base for direct restorations, and indirect restorations using the IDS (Immediate Dentin Sealing) technique; the IDS procedure refers to sealing dentin immediately after the preparation and before the final impression

HIGH RADIOPACITY FOR ACCURATE DETECTION



CLEARFIL MAJESTY™ Flow
290% of aluminum (ISO 4049)



Competitor's product

RESTORATION CAN BE DONE USING ONLY CLEARFIL MAJESTY™ FLOW



VIRTUALLY NO VOIDS OR BUBBLES



CLEARFIL MAJESTY™ Flow



Competitor's product

CLEARFIL MAJESTY™ Flow is the perfect partner with all restorative materials. It dispenses with virtually no voids or bubbles (other products have voids), and can even be used alone as a final restoration.

ERGONOMIC SYRINGE.

The extra wide holder offers a good grip for easy and comfortable application.

The needle tip opening is smaller than that of competitive products. Due to a new technical detail, voids in the material are basically avoided.



ORDERING INFORMATION



CLEARFIL MAJESTY™ Flow Products

| Shade | Item Number | Contents |
|-------------|-------------|---|
| A1 | #2610KA | 1 Syringe for each shade (3.2g) 15 Needle tips |
| A2 | #2611KA | |
| A3 | #2612KA | |
| A3.5 | #2613KA | |
| B1 | #2615KA | |
| B2 | #2616KA | |
| C3 | #2618KA | |
| D3 | #2619KA | |
| E2 | #2620KA | |
| Cv | #2621KA | |
| OA3 | #2632KA | |
| BL2 | #2635KA | |
| Needle Tips | #1015KA | 20 |
| Shade Guide | #2153KA | 1 |

YOUR CONTACT

Kuraray America, Inc.

32 Old Slip Phone (800) 879-1676
Floor 7 Fax (888) 700-5200
New York, NY 10005 E-mail info@kuraraydental.com
Website www.kuraraydental.com

- Before using this product, be sure to read the Instructions for Use supplied with the product.
- The specifications and appearance of the product are subject to change without notice.
- Printed color can be slightly different from actual color.

"CLEARFIL" and "CLEARFIL MAJESTY" are registered trademarks or trademarks of KURARAY CO., LTD.



Kuraray Noritake Dental Inc.

1621 Sakazu, Kurashiki, Okayama 710-0801, Japan

Rx Only



CE 0120