



DENTAL BONDING AGENTS

CLEARFIL™
Universal Bond Quick 2

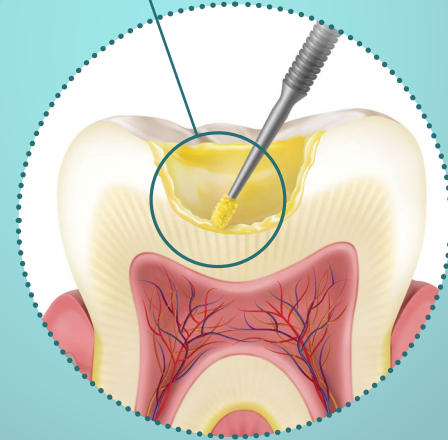
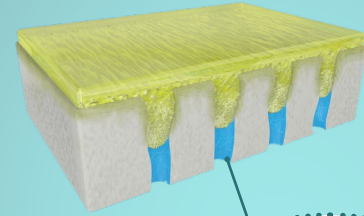


Simple & predictable

CLEARFIL™ Universal Bond Quick 2 is the latest adhesive from Kuraray Noritake Dental, the innovative dental company that pioneered etching and chemically bonding dentin, as well as formulating the Original MDP adhesive monomer.

CLEARFIL™ Universal Bond Quick 2 provides new chemistry for next generation single-bottle adhesive dentistry.

The proprietary Urethane Tetramethacrylate (UTM) technology helps to create a strong uniform bond layer.



Engineered to endure

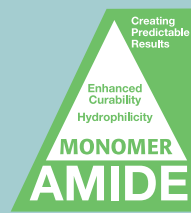
Combining MDP, Amide, and Urethane monomers, the bonding agent can bond to the dentin immediately without waiting time.

This new chemistry also enables a thin and easy application that does not affect the bond layer's strength.



MDP

MDP synthesized and refined independently by Kuraray Noritake Dental.



AMIDE

Highly hydrophilic and, after polymerization, hydrophobic, and water-resistant.

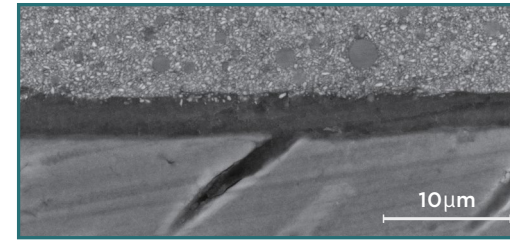


URETHANE TETRAMETHACRYLATE

The original multi-functional monomer provides an increase in the strength of the bond layer.

Easy to apply independent of cavity morphology

Thin adhesive layer prevents adhesive pooling in margins and abutments, and creates a uniform bond layer. Applies thinly and disperses evenly.



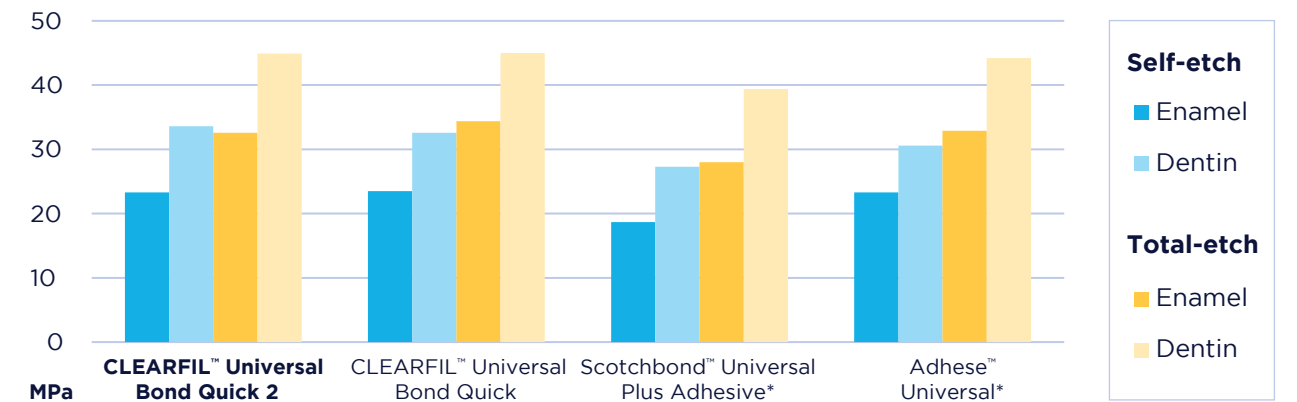
Filled with CLEARFIL MAJESTY™ ES Flow/CLEARFIL™ Universal Bond Quick 2 and visualized with Scanning Electron Microscope (SEM). Scale: 10 µm Source: Kuraray Noritake Dental Inc.

Key features

- Quick Application & No Waiting Time
- Lower Film-Thickness
- Stronger Bond Layers
- Uniform Bond Layer (Prevents Pooling)
- Room Temperature Storage

CLEARFIL™ Universal Bond Quick 2 exhibits high bond strength in all etching modes.

Test conditions: Notched-edge shear bond strength to bovine teeth (ISO29022) Adherent surface: bovine enamel and dentin #600 polished surface, Coated area: 2.38 mm dia. Irradiator: PenCure 2000 standard mode. Stored in water at 37°C for 24 hours. Shear bond strength is measured by autograph (crosshead speed: 1mm/min).



Test Methods: Notched-edge shear bond strength to bovine teeth (ISO29022)

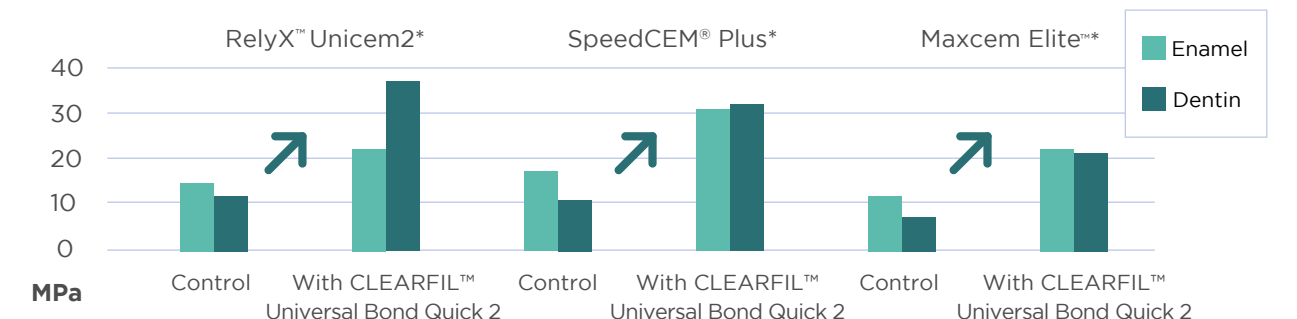
*Not a trademark of Kuraray Co., Ltd

Source: Kuraray Noritake Dental, Inc.

Universal self-adhesive cement compatibility

Shear bond strength to tooth structure when used in combination with other self-adhesive cement.

Test conditions: adherent surface: human enamel or dentin #1000 polished surface adherend area: 3 mm dia. Irradiator: PenCure 2000 standard mode. Stored in water at 37°C for 24 hours. Shear bond strength is measured by autograph (crosshead speed: 1mm/min)
Control: Control: Direct application to human dentin without pre-treatment.

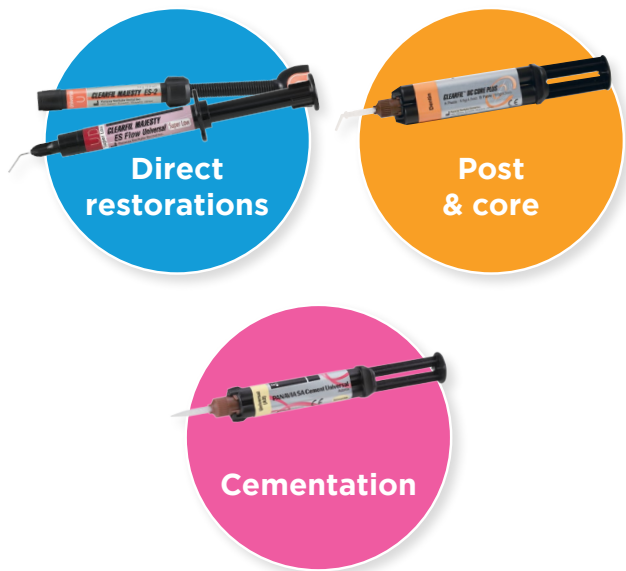


*Not a trademark of Kuraray Co., Ltd

Source: Kuraray Noritake Dental, Inc.

In case of using other manufacturer self-adhesive cements, light-cure of CLEARFIL™ Universal Bond Quick 2 is required.
In case of using CLEARFIL™ Universal Bond Quick 2 with PANAVIA™ SA Universal Cement, light-cure of the bond is not required.

Simplified, universal restorative system without separate activators *



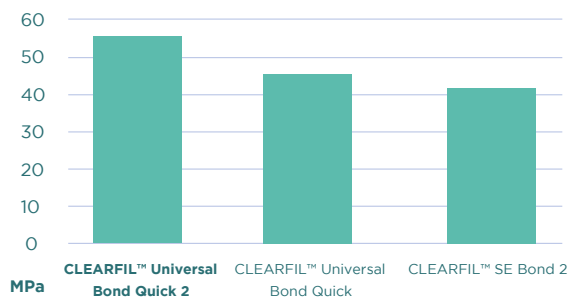
*In cases where CLEARFIL™ DC CORE PLUS and PANAVIA™ SA Cement Universal are used. When using with other manufacturers products, please refer to the IFU for specific instructions.

Ideal companion for immediate dentin sealing with a strong bond layer

Strong adhesive layer with higher mechanical strength will be an ideal companion to seal and protect dentin.

Test conditions: Samples (beam shape; 1.0 x 1.0 x 10 mm):
 1) Light curing of bonding material with solvent distilled away
 2) Stored in water at 37°C for 24 hours.
 3) Ultimate tensile strength is measured by autograph (crosshead speed: 1mm/min)

Ultimate tensile strength



K. Hosaka et al., (Tokushima Univ.)
 The 159th Meeting the Japanese Society of Conservative Dentistry Program A7

Direct restorations using light-cure composite resin

- Tooth pretreatment**
Choose either etching procedure
 - Self-etching** (Move to section 2)
 - Selective-etching**
Apply K-ETCHANT Syringe to the uncut and/or cut enamel, then rinse and dry **10sec.**
 - Total-etching**
Apply K-ETCHANT Syringe to the entire cavity (enamel and dentin), then rinse and dry **10sec.**
- Apply BOND with a rubbing motion**
No waiting time
- Dry by blowing mild air until BOND does not move***
5sec.+
- Light-cure****
- Place composite resin, light-cure and finish**

*1 Use a vacuum aspirator to prevent BOND from scattering.

** Refer to Table below for light-curing time.

Dental curing unit and curing time			
Type	Light source	Light Intensity	Light-curing time
Halogen	Halogen lamp	More than 400 mW/cm ²	10 seconds
		800-1400 mW/cm ²	10 seconds
LED	Blue LED*	More than 1500 mW/cm ²	5 seconds

The effective wavelength range of each dental curing unit must be 400-515nm.
 *Peak of emission spectrum: 450-480nm

Ordering information

#4041-KA
Bottle Standard Kit

- 1-Bond (5ml)
- 1-K-ETCHANT Syringe (3ml) & 20 Needle Tips
- 1-Dispensing Dish
- 1-Light-Blocking Plate
- 50-Applicator Brushes (Fine Silver)

#4042-KA
Bottle Refill

- 1-Bond (5ml)

#4044-KA
Bottle Value Pack

- 3-Bonds (5ml each)

#4046-KA
Unit Dose Standard Pack

- 50 Unit-Dose
- 1-K-Etchant Syringe (3ml) & 20 Needle Tips
- 50-Applicator Brushes (Fine Silver)

#4047-KA
Unit Dose Value Pack

- 100 Unit-Dose
- 1-K-Etchant Syringe (3ml) & 20 Needle Tips
- 100-Applicator Brushes (Fine Silver)

YOUR CONTACT

Kuraray America, Inc.
 32 Old Slip Phone (800) 879-1676
 Floor 7 Fax (888) 700-5200
 New York, NY 10005 E-mail info@kuraraydental.com
 Website www.kuraraydental.com

- Before using this product, be sure to read the Instructions for Use supplied with the product.
- The specifications and appearance of the product are subject to change without notice.
- Printed color can be slightly different from actual color.

"CLEARFIL", "CLEARFIL MAJESTY" and "PANAVIA" are registered trademarks or trademarks of KURARAY CO., LTD.



Kuraray Noritake Dental Inc.
 1621 Sakazu, Kurashiki, Okayama 710-0801, Japan

R Only

