



# CLEARFIL™

## Universal Bond Quick 2

**Fast, Strong, Seamless  
The Bond Evolution**

- Quick Application & No Waiting Time
- Lower Film-Thickness
- Stronger Bond Layers
- Uniform Bond Layer (Prevents Pooling)
- Room Temperature Storage

### Advanced Rapid Bond Technology contributing to a seamless universal workflow

Scrubbing for 20 seconds is a thing of the past.  
Advanced Rapid Bond Technology is ready to cure as soon as you are.

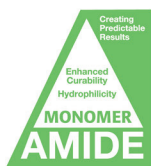


### Three monomers for thinner, stronger bonds, with no waiting time.

5 micron adhesive layer prevents pooling in cavity margins and abutments, and creates a uniform bond layer. Applies thinly and disperses evenly.



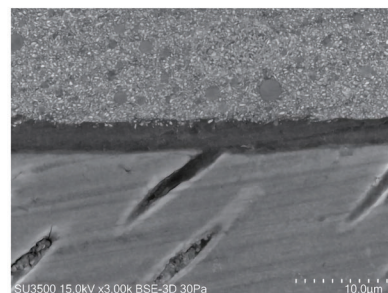
**MDP:** synthesized and refined independently by Kuraray Noritake Dental.



**AMIDE:** Highly hydrophilic and, after polymerization, hydrophobic, and water-resistant



**URETHANE TETRAMETHACRYLATE**  
The original multi-functional monomer provides an increase in the strength of the bond layer.



Filled with CLEARFIL MAJESTY™ ES Flow/CLEARFIL™ Universal Bond Quick 2 and visualized with Scanning Electron Microscope (SEM).  
**Scale:** 10µm  
**Source:** Kuraray Noritake Dental Inc.

## Universal compatibility for superior crown bonding

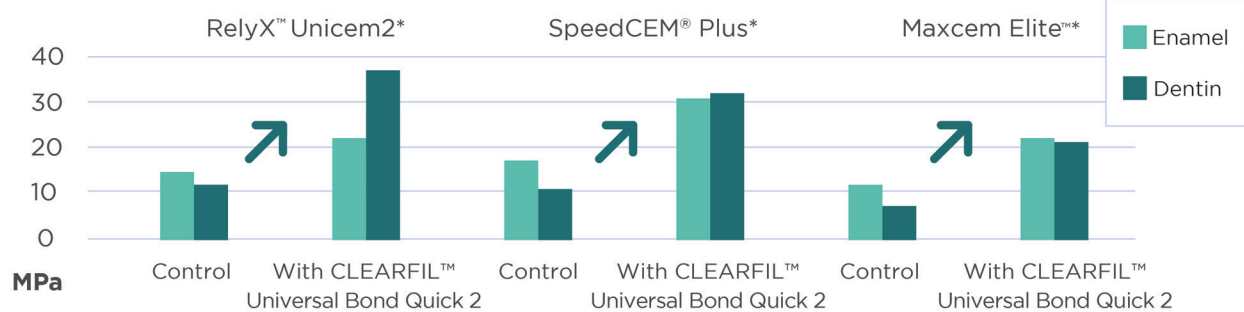
Designed to be compatible with PANAVIA™ SA Cement Universal for strong crown placement because of its enhanced strength and low film thickness. Works with other self adhesive cements with no dual-cure catalysts needed.

## Universal self-adhesive cement compatibility

Shear bond strength to tooth structure when used in combination with other self-adhesive cement.

**Test conditions:** adherend surface: human enamel or dentin #1000 polished surface adherend area: 3 mm dia. Irradiator: PenCure 2000 standard mode. Stored in water at 37°C for 24 hours. Shear bond strength is measured by autograph (crosshead speed: 1 mm/min)

**Control:** Control: Direct application to human dentin without pre-treatment.



\*Not a trademark of Kuraray Co., Ltd

Source: Kuraray Noritake Dental, Inc.

In case of using other manufacturer self-adhesive cements, light-cure of CLEARFIL™ Universal Bond Quick 2 is required.  
In case of using CLEARFIL™ Universal Bond Quick 2 with PANAVIA™ SA Universal Cement, light-cure of the bond is not required.

## Ordering information



**#4041-KA**  
**Bottle Standard Kit**  
1-Bond (5 ml)  
1-K-ETCHANT Syringe (3 ml)  
& 20 Needle Tips  
1-Dispensing Dish  
1-Light-Blocking Plate  
50-Applicator Brushes (Fine Silver)



**#4042-KA**  
**Bottle Refill**  
1-Bond (5 ml)



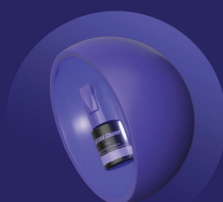
**#4044-KA**  
**Bottle Value Pack**  
3-Bonds (5 ml each)



**#4046-KA**  
**Unit Dose Standard Pack**  
50 Unit-Dose  
1-K-ETCHANT Syringe (3 ml)  
& 20 Needle Tips  
50-Applicator Brushes (Fine Silver)

**#4047-KA**  
**Unit Dose Value Pack**  
100 Unit-Dose  
1-K-ETCHANT Syringe (3 ml)  
& 20 Needle Tips  
100-Applicator Brushes (Fine Silver)

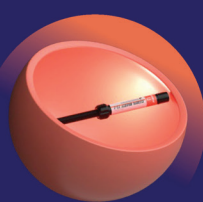
## Universal Excellence: Simplified Procedures



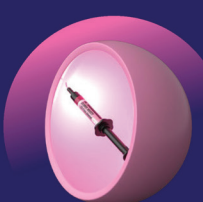
**KATANA™**  
Cleaner



**CLEARFIL™**  
Universal Bond Quick 2



**CLEARFIL MAJESTY™**  
ES-2 Universal



**CLEARFIL MAJESTY™ ES**  
Flow Universal



**PANAVIA™ SA Cement**  
Universal

Kuraray Noritake Dental, Inc. | 32 Old Slip FL 7 | New York | NY | 10005  
kuraraydental.com | info@kuraraydental.com | call: 800 879-1676

"CLEARFIL", "CLEARFIL MAJESTY" and "PANAVIA" are registered trademarks or trademarks of KURARAY CO., LTD.  
"KATANA" is a registered trademark or trademark of NORITAKE CO., LIMITED.