

kuraray

Noritake

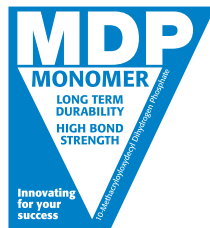


**Your Everyday
PANAIA™
Improved!**

PANAIA™ SA Cement Plus Automix / Handmix

A Self-Adhesive Resin Cement with the
Features of Glass Ionomer and
Kuraray's Legendary Adhesive Technology

Original MDP
Adhesive Monomer



**Fast & Easy
Clean-Up**

**New Chemistry for
Stronger Bonds & now
with Room Temperature
Storage**

**Choice of Automix and
Handmix**

Fluoride-releasing

**Shade Selection includes
Translucent, Universal and White**

YOUR EVERYDAY PANAVIA

PANAVIA SA Cement Plus¹ is a dual-cure, self-adhesive resin cement with a unique, fluoride-releasing mechanism that is available in convenient automix or economical handmix syringes.

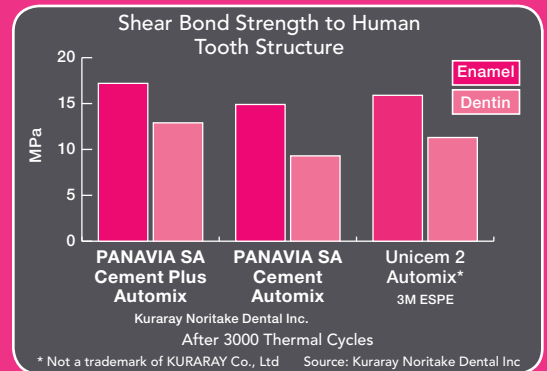
PANAVIA SA Cement Plus¹ provides an outstanding level of adhesion to enamel, dentin, metal, lithium disilicate and zirconia. Bond strengths are virtually unaffected by the dryness or wetness of the tooth structure. These high bond strengths, in combination with its very low water absorption rate, leads to long-lasting marginal integrity for your restorations.

This reliable, self-adhesive cement offers a unique catalyst-controlled setting mechanism which provides an easier clean-up technique with shorter chair-time and reduces the possibility of damaging the gingiva.

NEW CATALYST CHEMISTRY PROVIDES:

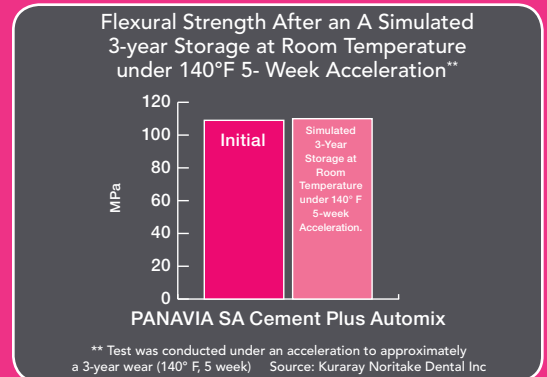
1 Stronger Shear Bond Strengths

New PANAVIA SA Cement Plus¹ has approximately 35% increase in dentin bond strength and approximately 15% increase in enamel bond strength as shown in durability testing.



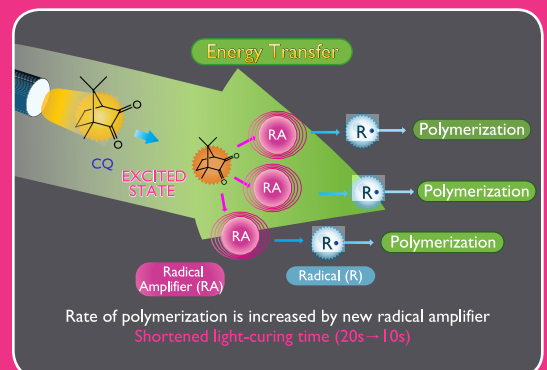
2 Stable Room Temperature Storage

Refrigeration is no longer necessary. PANAVIA SA Cement Plus¹ has a stable 3-year shelf-life at room temperature (36-77°F).



3 Faster Light-curing Time (10 seconds)

A new Radical Amplifier increases the rate of polymerization, shortens the light-curing time, and increases the bond strength.



1983

First Resin Cement



Since 1983, with the introduction of PANAVIA EX resin cement & the original MDP adhesive monomer, Kuraray has provided innovative & exceptional adhesive technologies that have improved the quality of adhesion dentistry.

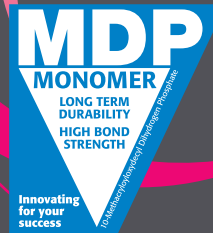
Now we present PANAVIA SA Cement Plus¹; a self-adhesive, dual-cure, fluoride-releasing resin cement upgraded from the original award winning, PANAVIA SA Cement.

EXCEPTIONAL ZIRCONIA BOND STRENGTHS

Systematic Review of Adhesion Studies on Zirconia*

Based on Research gathered over 15 years:

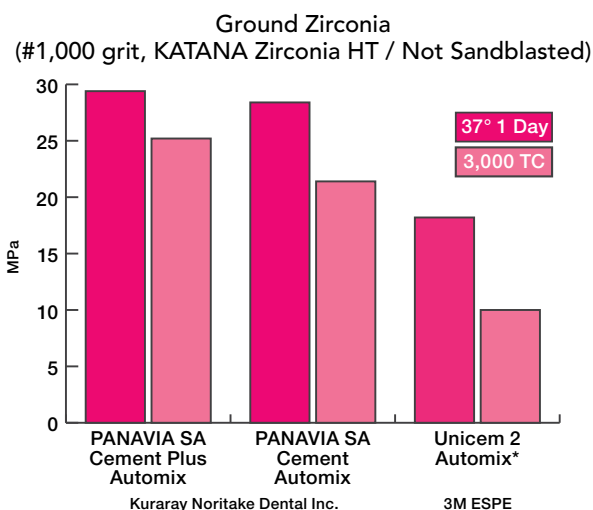
“...regardless of the conditioning methods, MDP-monomer based cements presented the most favorable bond values compared to those of other resin cements.”



*2011, IADR Abstract 374, M. ÖZCAN, Center for Dental and Oral Medicine, Dental Materials Unit, University of Zurich, Zurich, Switzerland, and M. BERNASCONI, University of Zurich, Center for Dental and Oral Medicine, Dental Materials Unit, Clinic for Fixed and Removable Prosthodontics, Zurich, Switzerland

CHEMICAL BONDING TO ZIRCONIA:

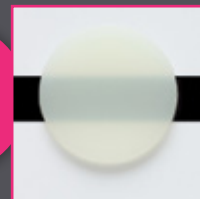
Multiple research studies over the past 20-years have shown that obtaining a strong, durable bond to zirconia can be difficult. **PANAVIA SA Cement Plus¹**, with its high concentration of **MDP**, bonds to zirconia chemically as well as micro-mechanically, which provides you with additional strength and comfort. The graph below illustrates this point by showing the bond strength results if zirconia is only ground with #1,000 grit silicon carbide paper instead of sandblasting.



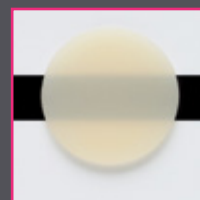
* Not a trademark of KURARAY Co., Ltd Source: Kuraray Noritake Dental Inc

3 SHADES

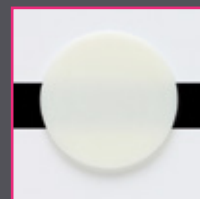
NEW SHADE



Translucent



Universal (A2)

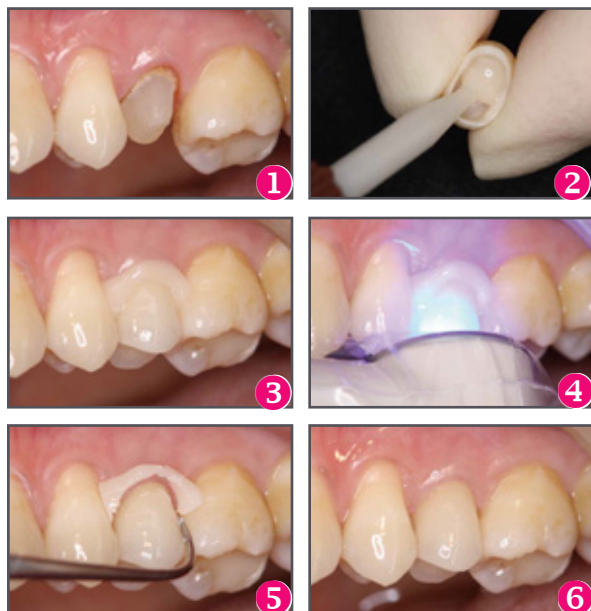


White

Image may appear slightly different from actual product

FAST AND EASY

PANAVIA SA Cement Plus¹ offers the same easy clean-up as its predecessor.



Photos courtesy of Dr. Kato, Takanawa Dent.

ENDO TIP

For Precise Placement Every Time!



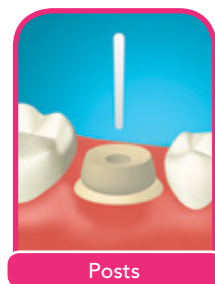
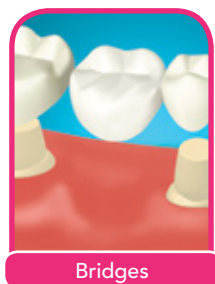
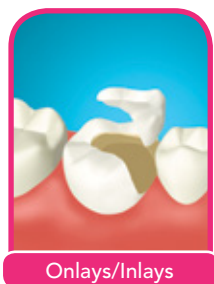
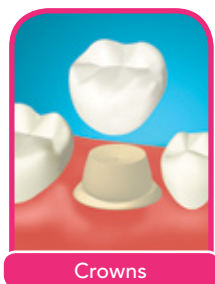
Photo by courtesy of Prof. Dr. M. Ferrari, Livorno

1 Denotes both PANAVIA SA Cement Plus Automix and PANAVIA SA Cement Plus Handmix

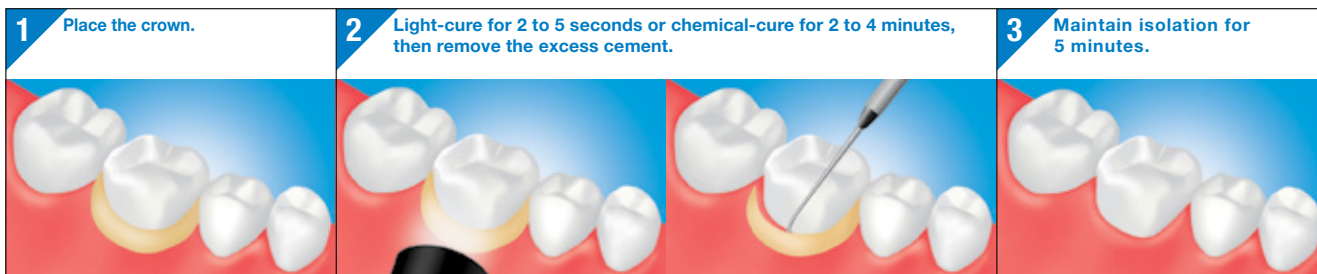
PANAVIA SA Cement Plus¹ can be used with all current popular materials:

- Zirconia (e.g. Zirprime, KATANA Zirconia, BruxZir* Solid Zirconia)
- Feldspathic porcelain
- Lithium disilicate (e.g. IPS e.max*)
- Leucite reinforced glass ceramic (e.g. IPS Empress*)
- Metal
- Composite resin

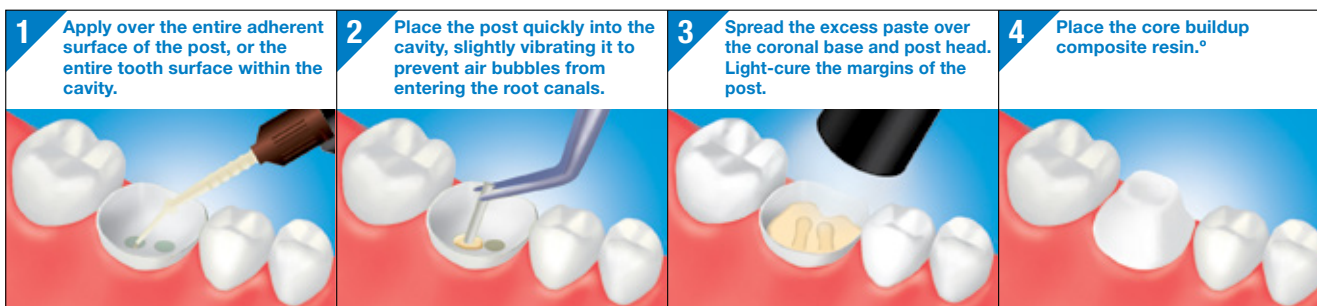
* Not a trademark of KURARAY Co., Ltd



CEMENTATION OF CROWNS



CEMENTATION OF POSTS



> For HANDMIX option, mixing is required. Please refer to the PANAVIA SA Cement Plus Handmix IFU.

^o Prepare the abutment tooth 10 minutes after placing the dental post.

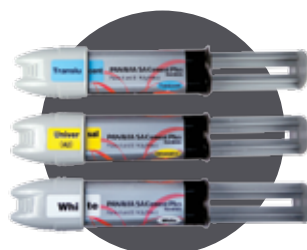
ORDERING INFORMATION



PANAVIA SA Cement Plus Automix
 #3382KA Universal (A2)
 #3383KA White
 #3384KA Translucent
 Content: 1 syringe:
 • Paste A and B: 8.0 g (4.6 ml)
 Mixing Tip: 20 tips



PANAVIA SA Cement Plus Automix: VALUE KIT
 #3385KA Universal (A2)
 #3387KA Translucent
 Content: 3 syringes:
 • Paste A and B: 8.0 g (4.6 ml)
 Mixing Tip: 2 x 20 tips
 Endo Tip (SS): 10 tips



PANAVIA SA Cement Plus Handmix
 #3352KA Universal (A2)
 #3353KA White
 #3354KA Translucent
 Content: 1 syringe:
 • Paste A and B: 9.3 g (5.0 ml)

PANAVIA SA Cement Plus Automix: Accessories

#3391KA
Mixing Tip
(20 PCS)

#3392KA
Endo Tip (SS)
(20 PCS)

¹ Denotes both PANAVIA SA Cement Plus Automix and PANAVIA SA Cement Plus Handmix

Warranty: Kuraray Noritake Dental Inc. will replace any product that is proved to be defective. Neither Kuraray Noritake Dental Inc. nor the distributor accepts liability for any loss or damage, direct, consequential or special, arising out of the application or use of or the inability to use these products. Before using, the user should determine the suitability of the products for the intended use and the user assumes all risk and liability whatsoever in connection therewith. PANAVIA™ SA Cement Plus and Kuraray Noritake Dental Inc. products are available only through Kuraray Authorized dealers. "KATANA" and "Zirprime" are trademarks of NORITAKE CO., LIMITED. "CLEARFIL" and "PANAVIA" are trademarks of KURARAY Co.,Ltd.

Manufactured by Kuraray Noritake Dental Inc.
 1621 Sakazu, Kurashiki, Okayama 710-0801, Japan

#3382LT